



GUELPH MERCURY

Interchange cost climbs

Price tag for Laird Road-Hanlon cloverleaf up \$800,000 from original estimate

By JOANNE SHUTTLEWORTH
MERCURY STAFF

GUELPH

The estimated cost for a cloverleaf interchange at Laird Road and the Hanlon Expressway has jumped by \$800,000 since city council ap-

proved the project in October. Construction will begin with interim improvements to the exits at Laird and Clair roads this fall and should be complete by November. Construction of the overpass begins in 2009 and is expected to be finished by 2011.

When the Laird Road interchange opens, access to Clair Road will close. Laird Road will be the access point to the existing Hanlon Business Park and the South Guelph Industrial Lands on the east of the Hanlon, and the proposed Hanlon Creek

Business Park to the west of the Hanlon. Council decided it would be proactive to build the overpass before new businesses fill the industrial parks and increased truck traffic snarls the highway. The initial estimate for con-

structing an interchange at Laird Road, similar to the one at Wellington Street, was pegged at \$15.4 million, with the Ministry of Transportation paying \$5.6 million and the city contributing the remaining \$9.8 million, said Rajan Philips, acting manager of

Transportation Planning and Development Engineering for Guelph. "The first estimate we did was preliminary. Now it's more firm. That's why it went from \$15.4 million to \$16.2 million," he said. **SEE CLOVERLEAF: PAGE A2**

PARCHED PITCH



Taylor Embree, 6, left, and Alannah Chung, 6, with the Guelph Youth soccer league, vie for the ball at the Bishop Macdonell soccer field Saturday morning. Soccer teams across the city are struggling to play on parched pitches that have left the grass looking like hay. For more about Guelphites feeling the drought, see page A3.

Nestlé holds Q&A session tomorrow

Residents can learn about future water plans at Puslinch meeting

By THANA DHARMARAJAH
MERCURY STAFF

GUELPH

If you have questions about Nestlé's water-bottling operation, now is your chance to get some answers.

The company is holding an information session tomorrow at the Puslinch Community Centre. Nestlé staff will be there with poster boards explaining the company's current activities from 3 to 5 p.m. and 6 to 7:30 p.m., after which they will open the floor to questions.

Frank Montgomerie worries about Nestlé's intention to build a backup well in Aberfoyle.

The bottled-water company announced plans to find a secondary water source when it applied for a renewal of its permit to take water in Aberfoyle.

At a Puslinch Township council meeting in May, residents expressed their concern about Nestlé looking for backup wells along Badenoch Road and Victoria Road. They're worried Nestlé's water-pumping operation will cause their own wells to dry up.

The second well is a backup in case they face any problems with the original well, said Nestlé president Gail Cosman.

"It's like an insurance policy," she said. "We're not looking for any more water at the well."

She said Nestlé will take water from both wells, but it will not exceed the current permit, which allows it to access 2,500 litres of water per minute.

Nestlé is seeking to renew its permit to take 3.6 million litres



DAVE CARTER, GUELPH MERCURY
Frank Montgomerie is concerned Nestlé may open a backup well in the Puslinch area.

of water per day for the next five years.

The company has been granted permits every two years since it took over Aberfoyle Springs in 2001. At that time, it was using 1.1 million litres of water a day.

Although the current permit expired June 30, the company was granted a six-month extension by the Ministry of the Environment, Cosman said.

Along with the application to renew its permit, Nestlé announced plans to add 100,000-square feet to its Aberfoyle facility and new injection moulding machines so it can make water bottles on-site.

At the May council meeting, residents learned Nestlé drilled five test wells on Victoria Road and is awaiting a report from consultants.

SEE MEETING: PAGE A2

Walk for Jessica beats fundraising goal



DAVE CARTER, GUELPH MERCURY
An estimated 1,100 walkers raised \$170,000 for the Sick Kids Foundation at the Jessica's Footprint — A Walk in the Park in Guelph Saturday, easily surpassing the hoped-for amount of \$140,000.

By THANA DHARMARAJAH
MERCURY STAFF

GUELPH

Before Saturday, Tracey McGrath and Wendy Durigon didn't know each other.

But the two were united by the experience of a serious illness in a loved one: tiny Jessica Durigon and McGrath's niece were both diagnosed with tumours at a very young age.

In a brief moment Saturday, the two women bonded, sharing the pain each had endured by watching a family member battle cancer.

McGrath gave Durigon a sympathetic smile and volunteered to help with next year's

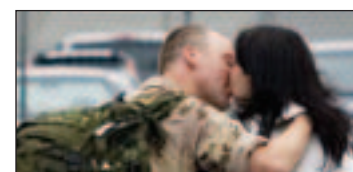
Jessica's Footprint — A Walk in the Park. The fundraiser exceeded its goal of \$140,000 Saturday, bringing in \$170,000 for pediatric brain tumour research through a five-kilometre walk.

Durigon's daughter, Jessica, was diagnosed with ependymoma, a type of cancer located where the brain and spinal column meet. At five months of age, the infant underwent an eight-hour surgery. A year later, the cancer returned, and Jessica died shortly afterwards at the Hospital for Sick Children in Toronto.

McGrath's niece was two years old when she was diagnosed with neuroblastoma.

SEE JESSICA: PAGE A2

INSIDE



EMOTIONAL FAREWELL
Van Dooos on their way to Kandahar • A4

RETURN OF OSAMA?
Al-Qaida video shows weary bin Laden • A6

Births-Deaths	B9	Horoscope	A10
Canada	A5	Life	A10
Classified	B6	Opinions	A9
Comics	B10	Scoreboard	B4
Cryptoquote		Sports	B1
and Jumble	B7	Sudoku	B6
Editorials	A8	World	A6

www.guelphmercury.com



GUELPH & DISTRICT HOMES

NOW ONLINE
QUICK LINK AT
www.guelphmercury.com

Your best source for new and resale homes in Guelph is now on line